



RotaLube® CHAIN LUBRICATION SYSTEM

Extend the service life of your chains and sprockets with the unique RotaLube® automatic lubrication system.

The optimum amount of lubrication at the right time. RotaLube® is the only industrial chain lubrication system that guarantees that the lubricant is applied at the correct lubrication point.

The automatic lubrication reacts to speed changes without delay and works perfectly for roller chains and conveyor chains of any size and type.

RotaLube®

A member of the  Group of Companies

ADVANTAGES



Longer chain life

Up to 60 times longer service life, especially recommended in corrosive environments



Cost savings

Increased system availability and profitability, reduces lubricant consumption, energy costs and spare parts costs



Simple and effective application

System runs fully automatically, easy to install, constant monitoring



Flexible

Can be used for different chain sizes, conveyed goods and operating conditions as well as lubricant types and manufacturers, system can lubricate from above, below or from the side

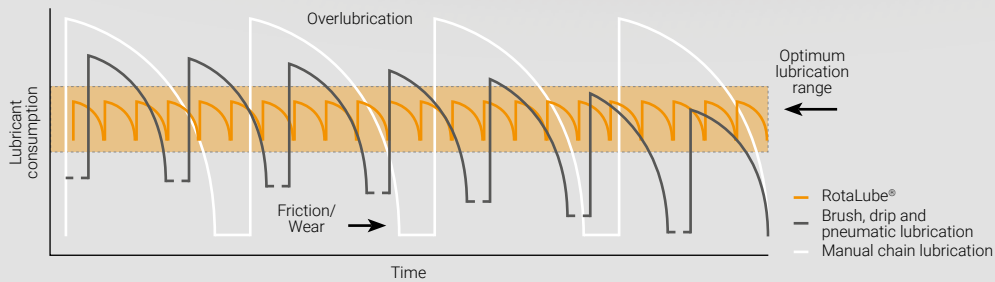


Environmentally friendly

No waste of lubricant by avoiding overlubrication

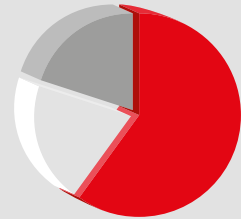


Efficiency of RotaLube®



Reasons for chain wear

- 60 % incorrect lubrication
- 20 % mechanical damage
- 20 % other reasons



RotaLube® PRODUCTS



RotaLube® System

- a pump system on the back plate and a comprehensive monitoring system in one housing
- up to 10 chain strands
- every single unit can be switched individually
- individual oil flow monitoring
- cleaning of jets and chains by air pressure
- air pressure individually adjustable
- automatic fill from an external oil drum



RotaLube® RA

- working temperature $\leq 80^{\circ}\text{C}$
- chain speed max. $\leq 70 \text{ m/min}$ (1,2 m/s)
- applicator made of plastics (POM)
- max. air pressure 1 bar (15 psi)
- sealings made in Nitril (NBR) or Viton (FKM)
- delivery incl. nozzles possible



RotaLube® PB

- working temperature $\leq 170^{\circ}\text{C}$
- chain speed max. $\leq 70 \text{ m/min}$ (1,2 m/s)
- applicator made in bronze
- max. air pressure 2 bar (30 psi)
- sealings made in Nitril (NBR) or Viton (FKM)
- delivery excl. nozzles



RotaLube® AL

- for chains with large pitches
- working temperature $\leq 170^{\circ}\text{C}$
- chain speed max. $\leq 70 \text{ m/min}$ (1,2 m/s)
- applicator made in aluminium
- optionally available in anodized execution (f.e. in corrosive environment)
- max. air pressure 2 bar (30 psi)
- sealings made in Nitril (NBR) or Viton (FKM)
- delivery incl. nozzles possible



RotaLube® HS

- for high speed applications
- working temperature $\leq 170^{\circ}\text{C}$
- chain speed max. $\geq 100 \text{ m/min}$ (1,7 m/s)
- applicator made in bronze or aluminium
- optionally available in anodized execution (f.e. in corrosive environment)
- max. air pressure 2 bar (30 psi)
- sealings made in Nitril (NBR) or Viton (FKM)
- delivery excl. nozzles



RotaLube® PH

- for applications in aggressive, acidic/alkaline environment
- working temperature $\leq 140^{\circ}\text{C}$
- chain speed max. $\leq 70 \text{ m/min}$ (1,2 m/s)
- applicator made in fluoroplastics or stainless steel
- max. air pressure 2 bar (30 psi)
- sealings made in Nitril (NBR), Viton (FKM) or Silicone
- delivery excl. nozzles



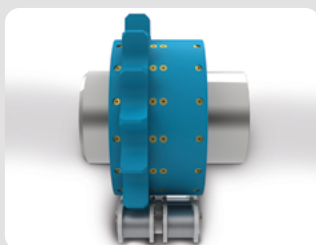
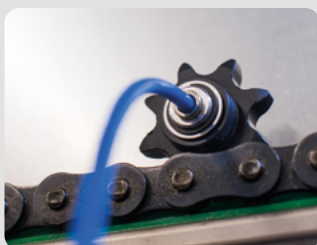
RotaLube® Ex

- for high temp. applications
- working temperature $\geq 300^{\circ}\text{C}$
- chain speed max. $\leq 70 \text{ m/min}$ (1,2 m/s)
- applicator made in Aluminium or Steel
- optionally available in anodized execution (f.e. in corrosive environment)
- max. air pressure 2 bar (30 psi)
- sealings made in Nitril (NBR), Viton (FKM) or Silicone
- delivery excl. nozzles

RotaLube® APPLICATION EXAMPLES

Simplex, duplex and triplex chains

- acetal (POM) sprocket and aluminium hub
- pitch $\frac{1}{2}$ " - $1 \frac{1}{4}$ " ex stock, different sizes upon request



Large pitch chains

- acetal (POM) sprocket with steel hub
- 12" chain in quarry and mining

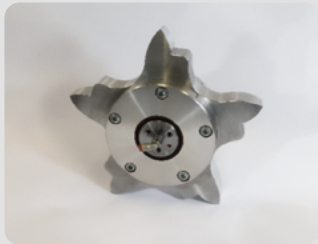


RotaLube® APPLICATION EXAMPLES



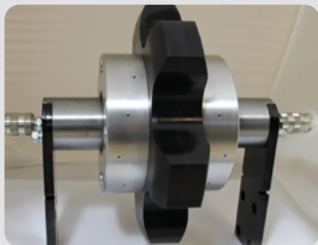
Double pitch oven chains with little space

High temperature applications with large pitch chains incl. attachments combined space restrictions



Conveyor chain incl. center pins or center bushes

Link chains with hollow pin or bushes assembled in the middle of the pitch will be lubricated with adopted applicators. Shown systems lubricated a bakery oven chain pitch 6" (152,4 mm)



Roller coaster chains

RotaLube® designed to lubricate the chain on roller coaster rides



Textile drying chain

System to lubricate clamping frame chains in textile dryers



Palletizers or stacking systems

In case of space restrictions, a turning sprocket will be used as a RotaLube® applicator



Accumulation roller chain for assembly lines

Accumulating chains difficult to lubricate with conventional systems due to the larger central roller



RotaLube® APPLICATION EXAMPLES



For gears

To ensure perfect conditions during the operation, the lubricant is applied while the gears are moving



High speed

Bronze sprocket RotaLube® system with hub made in steel, fitted with high speed bearings for chain speed up to 93 m/min (1,6 m/s)



Extremely high temperatures

RotaLube® made from bronze sprocket and steel hub fitted with high temperature seals to withstand temperatures of 300°C



Food Quality

RotaLube® with stainless steel sprockets and hubs to be used in food industry as well as chemical or corrosive conditions



Stainless steel for high temperature environment

RotaLube® with stainless steel sprockets and hubs to be used in food industry as well as chemical or corrosive conditions

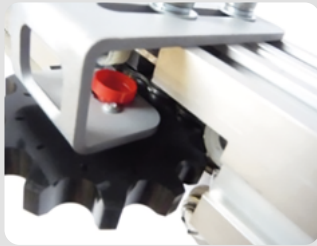


Chain tensioner / chain lubrication

RotaLube® lubrication system combined with chain tensioner



RotaLube® APPLICATION EXAMPLES



Horizontal assembly

RotaLube® systems can be mounted in the horizontal position. Many have been supplied for garment, paint or slaughter conveyors



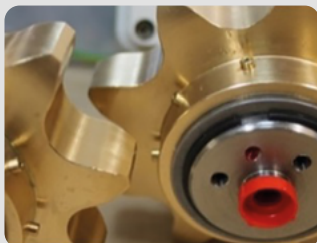
Clean & lubricate

RotaLube® applicators are being used to lubricate, in some cases the request is for the applicator to blow the chain prior to lubrication



Plastic chain cleaner

This RotaLubes® can be used with air only to blow f.e. breadcrumbs off the chain during production



Oil only system

RotaLubes® applicators made with special nozzles, used when air is not available or when the lubricant is of a high viscosity



Dual purpose RotaLube® system

Stainless steel RotaLube® applicators supplied with the low cost LC pump. The system is designed to clean the chain with water, dry the chain and then lubricate



RotaLube® space saver

RotaLube® made to reduce the overall diameter of the sprocket which enables the system to fit into small spaces

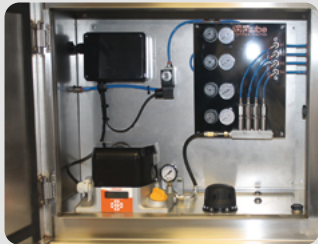


SPECIAL SOLUTIONS



Purpose built lubrication systems mounted on backplates

Lubrications systems for many types of applications, like air/oil, oil only, metered amounts of oil, low volume / high volume etc.



Purpose-built stainless steel enclosure (dustproof)

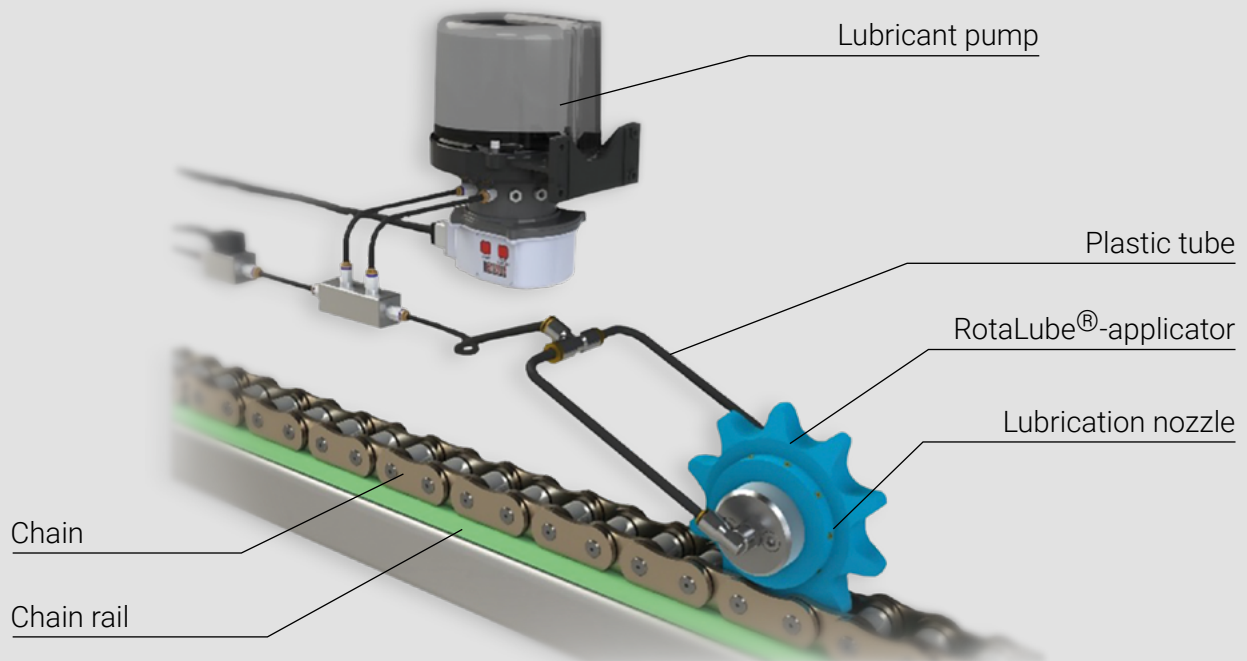
Oil pump with 12 litres reservoir and four outlets inside a stainless-steel enclosure



Inaccessible aerosol kits

Kits to lubricate simplex roller chain pitch $\frac{1}{2}$ " - $1\frac{1}{4}$ "

ASSEMBLY EXAMPLE



TYPICAL APPLICATIONS

Extend the chain life with RotaLube® automatic lubrication system – a truly simple and effective solution to extending chain life. Whatever the size of the chain, there is a RotaLube® solution.



Food industry

Pelletizer, stackers, filling lines, lifts, freezers, processing, overhead conveyors, slaughter conveyors, packaging, ovens, proofers, coolers, slicers, moulding plants, pin ovens



Paper and packaging industry

Paper roller conveyors, log yards, recycle paper conveyors, chain conveyors, cellulose conveying, packaging, corrugated board conveying



Wood industry

Power drives, profile canters, edgers, board transport



Construction industry, recycling, heat incineration, mining

Apron conveyors, cross conveyor, brick elevators, through chain conveyors, portal scrapers



Theme parks

Roller coasters, wild water rides



IMPORTANT PROPERTIES OF LUBRICANT:

- very good creep behaviour to quickly penetrate the gap between the chain components
- excellent protection against wear and corrosion
- resistant to dirt, water, various acids, etc.
- highest water and oxidation resistance
- very good long-term adhesion, so that the lubricants cannot be flung from the chain in case of large centrifugal forces
- lubricants with cleaning properties are ideal



FB Ketten Handelsgesellschaft mbH
Gewerbepark Süd 5, A-6330 Kufstein • phone +43 5372 61466, fax +43 5372 61466-20
fbketten@fb-ketten.com • www.fb-ketten.at

Profitable chain-solutions for a sustainable tomorrow